

THE EVENT HORIZON



ST. LOUIS ASTRONOMICAL SOCIETY

Devoted to the Interest and Advancement of the Science of Astronomy

VOLUME 25, Issue 1
January, 2015

Beyond the Hubble Space Telescope: New Observatories, New Discoveries and Skywatching 2015

Paul Baldwin and Mark Jones will be featured at the January meeting of the Saint Louis Astronomical Society. The meeting will begin at 7:30 pm Friday, January 16, in McDonnell Hall, Room 162, on the Washington University campus

“Beyond the Hubble...” will be an introduction to the major new observatories being built on the ground and planned for launch into space during the next few years. Huge new ground telescopes and advanced space telescopes promise to produce many advances in our understanding of the universe. Mr. Baldwin will talk about the new facilities, and also about the areas of astronomy and planetary sciences in which some of the new discoveries are likely to occur. Mark Jones will talk about the major events that will occur in the night skies of 2015, including the close pass of Mercury by Venus in the early evening skies of mid-January.

Paul Baldwin is an aeronautical and astronautical engineer who has been following space exploration for over 35 years. He is currently Vice President of the St. Louis Astronomical Society and a founding member of St. Louis Space Frontier. Mark Jones, currently Secretary of the Astronomical Society, is a veteran amateur astronomer and astronomy outreach volunteer.

Future meetings:

February William Smith Kepler

March Open

April - Dr. Joseph Marcus M.D. Comet 67P And the Rosetta Spacecraft”

May - Kathrin Powell “All the Mars Rovers and Discoveries”

Calling All Interested in Volunteering for Outreach! Training for Volunteers for Library Programs on January 29th at Schlafly Library Branch

The Library Telescope program has done a great deal to bring SLAS to the forefront of the public eye. As a result, we have many star parties scheduled in places we have not been often before, especially libraries. The library programs are designed to introduce the easy-to-use Library Telescope, a 4.5 inch Orion Starblast tabletop reflector, to the public before they check one out. We spend about an hour inside getting the patrons hands-on instruction in using the telescope, then we take them outside to show them some objects in the sky. It's a simple program and it's designed for people who have never used a telescope before.

That makes this program a perfect introduction to those who want to get started in outreach but have never done it before. This session will provide basic training to potential SLAS volunteers on how to use the Library Telescope while working with the public. Attendees will get hands on training with the library telescope and an orientation to the typical issues faced by star party volunteers. There will be recognition awards for 3 levels of involvement in the programs. No experience is necessary.

We hope to get a great turnout for this training to expand the joy of outreach to many new and other interested members.

We look forward to seeing you there!

Mid States Region



Inside This Issue

| | |
|---|----------|
| President's Corner, Raffle, | 2 |
| Recognition, Outreach awards | 3 |
| 10 Reasons Missouri Should Make August 21, 2017 a State Holiday | 5 |
| December Financials | 6 |
| December Board | 7 |
| Events | 8 |
| Contact | 9 |

Membership Recognition Committee

by
Larry Campbell

A Membership Recognition Committee is being formed and an email address (recognition@slasonline.org) has been set up so that recommendations can be submitted to the committee. The chairman, Larry Campbell, is seeking committee members to begin the task of deciding how best to recognize the many volunteers within SLAS who donate so much time and effort to our society. If you have any experience with any recognition programs with any organization (astronomical or otherwise), please contact Larry and volunteer to serve on this committee. However, experience is not a prerequisite to serving on the committee.

A primary goal of the committee is to create a recognition program with annual recipients of various rewards. This program will go beyond the annual recognition of our Outreach volunteers. However, exactly how we will do this is "To Be Determined." If you have any thoughts on this subject, please share them with the committee. A \$200 budget has been allocated for this effort. Help decide how to spend it wisely.

SLAS Volunteer Efforts in 2014

by
Mark Jones

In 2014, SLAS members volunteered for 72 events and logged 736.6 hrs for NSN events.

Examples of 2014 Events

- Astronomy Night at Wildwood Middle School
- Babler Outdoor Education Center
- Creve Coeur Golf Course Stargazing
- Edward Jones Family YMCA
- Faith Academy of Montessori Webster Groves (Larson Park)
- Francis Park Stargazing
- Girl Scout Camp Cedarledge in Pevely
- Great American Backyard Campout
- Halls Ferry Elementary School
- Kennard Classical Junior Academy Math and Science Night
- Kirkwood Library Staff Training
- Kirkwood Park
- LaSalle Springs Middle School Math/Science Night
- Mallinckrodt Academy Career Night
- Maplewood Public Library
- National Astronomy Day
- Night Sky over Babler
- Old Bonhomme School Science Night
- Private star party for Charity Raffle
- Public Telescope Viewing

- Science Olympiad
- SLAS Partial Solar Eclipse Viewing
- Snores & S'mores Camp Out
- Solar Eclipse Viewing on MasterCard campus O
- St Louis County Library - Tesson Ferry Staff Training
- St. Josephs Imperial 3rd Grade Viewing
- St. Louis County Library - Daniel Boone Branch
- St. Louis County Library - Florrisant Valley Branch
- St. Louis County Library - Lewis & Clark Branch
- St. Louis County Library HQ Staff Training
- St. Louis Public Library - Barr Branch Star Party/Educational Program
- St. Louis Public Library HQ
- Star Gazing Night at Parkway North
- Star Party at Kirkwood Public Library
- Star Party at the Machacek Library
- Stargazing at Crestwood Park - International Observe the Moon Night
- Stargazing at the Gateway Arch
- University City Library Staff Training
- Viewing session for the Boy Scouts of America at Beaumont Scout Ranch
- Webster Nature Society at Shaw Nature Reserve
- Woerther/Ballwin Science Night

Night Sky Network Offers Award Certificates and Pins to recognize individuals who have volunteered and performed Outreach in 2014. Since 2011 NSN and SLAS has been providing awards to members with 5 or more event during the calendar year.

2014 Awards, 5 or more events

| | |
|--------------------|----------------------|
| Cook Feldman | 33 events; 108.3hrs |
| John Beaury | 29 events; 95hrs |
| Donald Ficken | 28 events; 76.1hrs |
| Larry Campbell | 21 events; 63hrs |
| Mark Jones | 17 events; 57hrs |
| James Small | 15 events; 41hrs |
| Jim Trull | 12 events; 39hrs |
| Rich Heuermann | 11 events; 22hrs |
| Richard Fefferman | 7events; 16.3hrs |
| Bill Breeden | 6 events; 18hrs |
| William Winningham | 6events; 16hrs |
| Ann Trull | 5 events; 17hrs |
| Brian Mills | 5 events; 11.5hrs |
| Rick Menendez | 5 events; 13.3hrs |
| Michael Malolepszy | Outreach Coordinator |



Other Volunteers, Less than 5 events

| | |
|---------------------|-------------------|
| Benjamin Winningham | 4 events; 10.5hrs |
| Bill Biermann | 4 events; 13.3hrs |
| Grant Martin | 4 events; 18.8hrs |
| Richard Jennings | 4 events; 11 hrs |

(Continued from page 3)

| | |
|--------------------|------------------|
| Annalise Biermann | 2 events; 6hrs |
| Dan Duffy | 2 events; 5.3hrs |
| Nathan Biermann | 2 events; 7.3hrs |
| Paul Baldwin | 2 events; 4hrs |
| Robert Fischer | 2 events; 8.5hrs |
| Tom Keutzer | 2 events; 5hrs |
| Wayne Clark | 2 events; 9hrs |
| Amy White | 1 events; 2.8hrs |
| Andrew Kniffin | 1 events; 2.8hrs |
| Bradley Waller | 1 events; 3hrs |
| Brent Buch | 1 events; 7hrs |
| Bryan White | 1 events; 2.8hrs |
| Carl Masthay | 1 events; 2hrs |
| Connie Gleason | 1 events; 1.5hrs |
| David Hammock | 1 events; 4hrs |
| Doug Blum | 1 events; 3hrs |
| Edward Frey | 1 events; 4hrs |
| Frank Mack | 1 events; 2.5hrs |
| Michael Malolepszy | 1 events; 3hrs |
| Sharon Bertram | 1 events; 4hrs |
| William Neubert | 1 events; 4hrs |

**Other award opportunities
Members may qualify for AL
Outreach Awards**

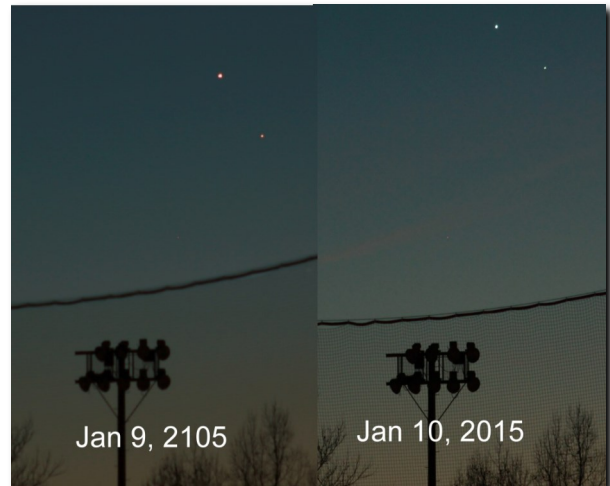
- Level 1 = 10hrs and 5 events
- Level 2 = Additional 50 hrs
- Level 3 = Additional 100 hrs

Volunteers since June 2007

Since June 2007 SLAS members have logged 3900 hrs for NSN events!

| | | | |
|----------|--------------------|------------|------------|
| AL Award | Cook Feldman | 546.1 hrs, | 168 events |
| | John Beaury | 440 hrs, | 143 events |
| AL Award | Donald Ficken | 316.8 hrs, | 107 events |
| | James Small | 283.5 hrs, | 91 events |
| | Jim Trull | 269.6 hrs, | 86 events |
| AL Award | Mark Jones | 197.8 hrs, | 61 events |
| AL Award | Bill Breeden | 186.5 hrs, | 65 events |
| AL Award | Grant Martin | 171.2 hrs, | 46 events |
| | Rick Menendez | 150.3 hrs, | 53 events |
| | Ann Trull | 141.1 hrs, | 46 events |
| | Larry Campbell | 109.5 hrs, | 37 events |
| | Richard Jennings | 106.3 hrs, | 36 events |
| | Michael Malolepszy | 82 hrs, | 24 events |
| | Abby Gordon | 74 hrs, | 25 events |
| | Bill Biermann | 67.3 hrs, | 19 events |
| AL Award | Rita Breeden | 59.5 hrs, | 20 events |
| | Rich Heuermann | 48 hrs, | 18 events |
| Al Award | Greenway, Glenn | 45 hrs, | 14 events |
| | Paul Baldwin | 43.5 hrs, | 12 events |
| | Rhonda Whelan | 43.5 hrs, | 12 events |
| | Lee Halbeck | 42 hrs, | 13 events |

| | | | |
|----------|---------------------|-----------|-----------|
| | Brent Buch | 38 hrs, | 10 events |
| AL Award | Jerry Loethen | 30 hrs, | 9 events |
| | Wayne Clark | 28.5 hrs, | 8 events |
| | Nathan Biermann | 28.3 hrs, | 8 events |
| | Steve Sands | 25.5 hrs, | 5 events |
| AL Award | Lois Fitter | 24 hrs, | 7 events |
| | Dan Duffy | 20.3 hrs, | 7 events |
| | Richard Fefferman | 18.3 hrs, | 8 events |
| | Bruce Logan | 18 hrs, | 6 events |
| Al Award | Naethe, Jeromy | 17.5 hrs, | 5 events |
| | Brian Mills | 16 hrs, | 6 events |
| | Connie Gleason | 16 hrs, | 6 events |
| | Gregory Gaines | 16 hrs, | 4 events |
| | William Winningham | 16 hrs, | 6 events |
| | John Newcomer | 14 hrs, | 5 events |
| | Jim Melka | 13 hrs, | 5 events |
| | Tom Keutzer | 12.5 hrs, | 5 events |
| | Daniel Corso | 11.5 hrs, | 4 events |
| | James Griffith | 11.3 hrs, | 3 events |
| | Benjamin Winningham | 10.5 hrs, | 4 events |
| | Andrew Kniffin | 8.8 hrs, | 2 events |
| | Robert Fischer | 8.5 hrs, | 2 events |
| | Gary Mockli | 8 hrs, | 2 events |
| | Thomas Schloemann | 7.5 hrs, | 3 events |
| | Bradley Waller | 7 hrs, | 2 events |
| | Doug Blum | 7 hrs, | 2 events |
| | Marvin Fridley | 7 hrs, | 2 events |
| | Annalise Biermann | 6 hrs, | 2 events |
| | Alan Sapia | 4.5 hrs, | 1 events |
| | David Hammock | 4 hrs, | 1 events |
| | Edward Frey | 4 hrs, | 1 events |
| | Sameer Siddiqui | 4 hrs, | 1 events |
| | Sharon Bertram | 4 hrs, | 1 events |
| | William Neubert | 4 hrs, | 1 events |
| | Aaron Jones | 3 hrs, | 1 events |
| | Dale Engelbrecht | 3 hrs, | 1 events |
| | Bryan White | 2.9 hrs, | 2 events |
| | Amy White | 2.8 hrs, | 1 events |
| | Frank Mack | 2.5 hrs, | 1 events |
| | Beverly Wrobel | 2 hrs, | 1 events |



Venus and Mercury on Jan 9 and 10
FL=140mm ISO 6400 Photo by Mark Jones

10 reasons Missouri Should Make August 21, 2017, a State Holiday

Posted by Michael Bakich on Monday, July 07, 2014

The great state of Missouri offers many attractions to visitors. None, however, compare to the celestial spectacle of the upcoming total solar eclipse August 21, 2017.

A while back, I had what I thought was a radical idea. But as I began to write about it, I realized that it makes perfect sense for a number of reasons — well, at least 10. Three years from now, on August 21, 2017, the United States will experience the biggest astronomical event in its history — a total eclipse of the Sun.

You think I'm kidding about that "biggest" proclamation? Then tell me something that topped it. Halley's Comet? Not even close. In fact, it was a real disappointment to most people back in 1986 because it wasn't all that close to Earth. A lunar eclipse? Been there, done that. A major meteor shower? Sorry, the number of people who will go out in the early morning hours pales in comparison to those who will see the upcoming eclipse during the daytime.

OK, well then what about past eclipses? Ha! Does anyone reading this actually remember the last total solar eclipse that covered any of the continental U.S.? It happened February 26, 1979, and it only clipped five states in the northwest — and many locations were cloudy. The previous "48 states" total solar eclipse, on March 7, 1970, again happened in only six states from Florida to Maryland.

In contrast, the 2017 total solar eclipse stretches west to east across the continental U.S. It first touches our border in Oregon and finally leaves via South Carolina.

And let's compare the dates: February 26 and March 7 vs. August 21? Winter vs. summer. Hmm. I think I know which season's weather will triumph in that tussle.

I also believe the 2017 event will be the most viewed eclipse in history. (In person, not on television — but probably there, too.) I base this on four factors: 1) the attention it will get from the media; 2) the superb coverage of the highway system in our country; 3) the typical weather on that date; and 4) the vast number of people who will have access to it from nearby large cities.

The July 22, 2009, total solar eclipse that traversed China had an opportunity to be the most viewed ever because of the massive numbers of people in cities in or near the path. Unfortunately, most of China was cloudy that day, and only a few locations saw it.

The bottom line is that I think Missouri should declare August 21, 2017, a state holiday, and I'm willing to back that statement up with 10 reasons. Please note: I chose Missouri because

of the great memories I enjoy when I think of my time there. I spent nine of the best years of my life as planetarium director of the Kansas City Museum. I really think, however, that any state where totality occurs should take this action.

And states can do this. Each can declare holidays if it chooses to do so. That takes care of state employees. Private employers don't have to follow suit, but I think many of them will. In fact, a "half-day off in the middle of the day" might be a great option for many of them. So, a week or so ago I wrote a short email to Missouri's Governor Jay Nixon. Maybe after reading the rest of this blog, you will, too.

OK, then, without further ado, here are my 10 reasons. Feel free to add to them in the "Comments" section.

#1: Tourism/tax dollars will make up any lost revenue.

Please remember that August 21, 2017, is a Monday. That means many people will plan on staying in Missouri the entire weekend. And two cities — Columbia and Saint Joseph — will be the center of the universe for three long days. (I'll be hosting an event in Saint Joseph, but more on that at a later date.)

#2: Most holidays are on a Monday anyway

With the exception of Independence Day, Thanksgiving Day, and Christmas Day, all federal holidays are observed on a Monday in accordance with the Uniform Monday Holiday Act, which took effect January 1, 1971. Eclipse day serendipitously falls on the same weekday.

#3: This event is rare

The next total solar eclipse over the continental U.S. occurs April 8, 2024. After that, it's a 20-year wait until August 23, 2044 (and, similar to the 1979 event, that one is visible only in Montana and North Dakota). Total solar eclipses follow in 2045 and 2078.

#4: This can be a one-time holiday

No need to make this an annual event. But it does need "holiday" status. Just making it some "special" day would be lame. Beyond lame. Transformers 4 lame.

#5: A government commitment shows science matters

Employers across this great nation are crying for more students entering scientific, technical, engineering, and mathematical (STEM) fields. Public events hosted by science groups and underwritten by corporations that were mere entertainment in years past now tend to have STEM components. And they're popular.

#6: Nobody wants to miss this

We all should face the realization that, if totality will be visible anywhere near your location, people will find a way to see it. Vacation days. Sick leave. Insert other reason here.

#7: This will be a terrific educational opportunity

In the weeks and months leading up to this event, amateur astronomers across Missouri will partner with schools and educa-

(Continued on page 6)

(Continued from page 5)

tors to get the word out about the eclipse. They will conduct numerous public events, daytime “star” parties to show off our Sun, and lots and lots of teacher workshops.

#8: Having schools in session will seriously disrupt classes

Columbia, Missouri, is on the center line of the total solar eclipse of August 21, 2017. In that year, the University of Missouri’s fall semester starts August 21. Now, I’m not blaming planners for this coincidence. They didn’t know. But can you imagine how seriously this eclipse will disrupt classes? Students won’t sit inside while such a spectacular event occurs. Heck, professors won’t sit inside either. The great halls of learning at MU will contain only ghosts.

#9: Planning is underway now

Both the American Astronomical Society and the National Science Foundation already are hosting events leading up to August 21, 2017. (I’m speaking at an upcoming one in Columbia.) Groups from outside the country are booking space in American hotels that lie along the eclipse path. Yes, we’re three years out. But things tend to move slowly — especially in political circles. The time to

start working on this is now!

#10: This event will happen

OK, let’s be honest. What’s the biggest thing the media and the general public holds against astronomers? It’s the uncertainty of many of the events we hold most dear. What uncertainty, you ask? Consider: “Comet science is an inexact art, but ...” (ISON) “Many scientists who study meteor showers think this one may reach storm levels ...” (the Camelopardalids) “This event is super-cool. You will, however, require at least a medium-size telescope to view it ...” (supernova in M82)

Forget those. Forget all of them and every event like them. This solar eclipse will occur at the predicted time, in the predicted place, and for the predicted length. And although you don’t need to hear it from me, I absolutely stone-cold guarantee that everyone who sees it will remember it for the rest of their lives as the greatest thing they ever saw.

Now, c’mon Show Me State. Whaddya say? Make August 21, 2017, a state holiday. Show your workers some love, and I’ll show you a celestial spectacle you will never, ever forget.

| St. Louis Astronomical Society | | |
|---------------------------------------|-------------------|-------------------|
| Balance Sheet | | |
| As of December 31, 2014 | | |
| | Dec 31, 13 | Dec 31, 14 |
| ASSETS | | |
| Current Assets | | |
| Checking/Savings | | |
| Checking - First Bank | 3,283.28 | 5,161.12 |
| Deposit, Certificate of | 20,027.97 | 20,068.06 |
| Library Telescope Escrow* | 0.00 | 1,660.10 |
| Merchandise Change Fund | 20.00 | 20.00 |
| PayPal | 24.15 | 82.81 |
| Savings - First Bank | 3,357.60 | 3,359.27 |
| YMCA Trout Lodge Escrow | 877.87 | 542.87 |
| Total Checking/Savings | 27,570.87 | 30,894.23 |
| Other Current Assets | | |
| Inventory Asset | 1,707.15 | 1,614.22 |
| Investment in Mid-States 2014 | 2,000.00 | 0.00 |
| Undeposited Funds | 0.00 | 261.95 |
| Total Other Current Assets | 3,707.15 | 1,876.17 |
| Total Current Assets | 31,278.02 | 32,770.40 |
| Fixed Assets | | |
| Accum Depr - Office Equip | (216.65) | (216.65) |
| Office Equipment | 216.65 | 216.65 |
| Total Fixed Assets | 0.00 | 0.00 |
| TOTAL ASSETS | 31,278.02 | 32,770.40 |
| LIABILITIES & EQUITY | | |
| Liabilities | | |
| Current Liabilities | | |
| Accounts Payable | | |
| Accounts Payable | 40.99 | 167.90 |
| Total Accounts Payable | 40.99 | 167.90 |
| Total Current Liabilities | 40.99 | 167.90 |
| Total Liabilities | 40.99 | 167.90 |
| Equity | | |
| Opening Bal Equity | 8,137.66 | 8,137.66 |
| Retained Earnings | 19,214.15 | 22,221.50 |
| Net Income | 3,885.22 | 2,243.34 |
| Total Equity | 31,237.03 | 32,602.50 |
| TOTAL LIABILITIES & EQUITY | 31,278.02 | 32,770.40 |

* Funds restricted for the Library Telescope Program

| St. Louis Astronomical Society | | | |
|--|---------------------|-------------------|-----------------------|
| Profit & Loss Budget vs. Actual | | | |
| January through December 2014 | | | |
| | Jan - Dec 14 | Budget | \$ Over Budget |
| Ordinary Income/Expense | | | |
| Income | | | |
| Magazine Subscription | 969.20 | 4,446.40 | (3,477.20) |
| Membership Dues * | 3,295.00 | 3,550.00 | (255.00) |
| Total Income | 4,264.20 | 7,996.40 | (3,732.20) |
| Cost of Goods Sold | | | |
| Magazine Subscriptions | 969.20 | 4,446.40 | (3,477.20) |
| Total COGS | 969.20 | 4,446.40 | (3,477.20) |
| Gross Profit | 3,295.00 | 3,550.00 | (255.00) |
| Expense | | | |
| 1-Programs & Events** | 1,955.16 | 2,700.00 | (744.84) |
| 2-Newsletter | 386.51 | 285.00 | 101.51 |
| 3-Library expense | 280.26 | 300.00 | (19.74) |
| 4-Astronomical League Dues | 650.00 | 660.00 | (10.00) |
| 5-Loaner Scopes | 207.20 | 300.00 | (92.80) |
| 6-Brochures | 80.60 | 250.00 | (169.40) |
| 7-Insurance | 380.00 | 380.00 | 0.00 |
| 8-Website | 113.88 | 108.00 | 5.88 |
| 9-Administrative Expenses | 267.92 | 450.00 | (182.08) |
| Total Expense | 4,321.53 | 5,433.00 | (1,111.47) |
| Net Ordinary Income | (1,026.53) | (1,883.00) | 856.47 |
| Other Income/Expense | | | |
| Other Income | | | |
| Donations | 963.28 | 0.00 | 963.28 |
| Interest Income | 41.76 | 100.00 | (58.24) |
| LTP Receipts | 7,025.00 | 0.00 | 7,025.00 |
| Non-Operating Income | 1,032.66 | 0.00 | 1,032.66 |
| Total Other Income | 9,062.70 | 100.00 | 8,962.70 |
| Other Expense | | | |
| LTP Disbursements | 5,364.90 | 0.00 | 5,364.90 |
| Non-operating Expense | 92.93 | 0.00 | 92.93 |
| YMCA Trout Lodge ESCROW Expense | 335.00 | 0.00 | 335.00 |
| Total Other Expense | 5,792.83 | 0.00 | 5,792.83 |
| Net Other Income | 3,269.87 | 100.00 | 3,169.87 |
| Net Income | 2,243.34 | (1,783.00) | 4,026.34 |

* Reflects a decrease in membership from 152 members as of 12/31/2013 to 147 as of 12/31/2014

** Includes \$1,000 approved by membership for the Library Telescope Program

St. Louis Astronomical Society Executive Board Meeting Minutes December 11, 2014

1. Opening Activities: Read and approve minutes from November Attendees: Jim Small, Bill Winningham, Larry Campbell, Brad Waller, and Mark Jones Meeting called to order 7:05pm. Nov minutes were mailed out prior to meeting. Brad made motion to approve the minutes, seconded by Larry, minutes approved

2. External Business SLSC First Friday: Jan 2, Star Trek Into Science

Next board meeting: Jan 8, Feb 12, March 12, April 9, May 7, June 11, July 9, August 6, Sept 10, Oct 8, Nov 12, Dec 10. Board Meeting dates for 2015 have been approved by YMCA. It was reported last month we would move Feb and March to the 5th but YMCA dates for the 12th are confirmed. The Board has decided to keep the meeting on the 12th per the YMCA schedule

3. Director Reports:

President: Homemade Fest is set for February 21, 2015 in Room 201a-b at Kirkwood Community Center from 5-10 pm. Kirkwood Parks Dept has graciously provided the facilities at no charge again. The room has ten 8' tables and 75 chairs. Like 2014, doors will open at 5pm to unload equipment and food and set up the room. We will begin eating at 6pm. Formal Opening and presentation begins at 6:45pm. Need volunteer to bring soda coffee and paper goods. \$100 budgeted for Home-made fest, includes food and door prizes. Brad has volunteered to get the door prizes for Home-made fest

Vice President –Paul Baldwin: December: Members share eclipse photos. January Mark Jones and Paul Baldwin – “Astronomical Events for 2015” and “Future Telescopes On The Ground And In Space And What They Will Discover” February - I am working on Dr. Joseph Marcus M.D. who will talk about Comet 67P And the Rosetta Spacecraft” March - Kathrin Powell might talk on “All the Mars Rovers and What They Have Discovered”

Astro 101: Topic for December: Larry Campbell’s Trip to German Museum

Secretary – Mark J Eclipse Conference with Science Center report. Second meeting held Dec 4th at SLSC. Committee is setting a goal to host a workshop in 2015. Target audiences still under discussion. Primary targets might be educators and city administrators. A group of SLAS members has decided to buy 50 magnetic bumper stickers for sale. No SLAS funds will be used.

Treasurer/ALCor – 2015 Budget narratives in, vote on the budget to be presented in the December newsletter and voted upon by the membership at the December meeting. December finance report submitted, report shows a net income of \$2200.43 through end of November.

Hospitality – Grant M no report submitted. Grant has submitted his resignation effective Dec 31, 2014. Open nominations at December meeting with election in January.

Board member at large reports

Larry Campbell Mark Jones nominated Larry Campbell to chair the Recognition Committee, Bill Winningham seconded. Board approved.

New e-mail address has been established call recognition@slasonline.org. Members can volunteer for the committee and email their suggestions to this mail box.

Tom Nickelson: No report submitted.

Brad Waller: Brad expressed concerned about discourteous behavior during the Friday general meetings, including yawning loudly, and asking questions out of turn. The Board decided that members of the Board should approach individuals in private if they feel behavior is in question.

4. Committee Reports: If needed

Library Telescope Program: Multiple star parties set up for the spring. Volunteers are needed, a volunteer plan is needed. Space Grant has donated \$1000, \$600 left from initial program. 2015 plan is to have 3 scopes for program use. Possible inclusion of scopes in loaner scope program as well. Deadline for next build will be around April. Proposing a contest for design and building of a case for telescopes, with results presented at Homemade Fest. Average monthly hits on our SLAS website increased from 35,000 hits/month to 340,000 hits/month, 140,000 hit in December though Dec 12th.

Membership – See Don Ficken’s membership report. 146 members as of Nov 30th, down from 153 a year ago.

Merchandise – SLAS logo is set up with Heads and Threadz on the Delmar Loop and in the Galleria. We will get a vector file of our logo that may be provided to other businesses for use in their set-up. It will be distributed to Johnny Mac sporting goods and to Infini-tees.

Telescope Making – no report submitted

Librarian – No changes

Newsletter – will include full budget and narrative, deadline for newsletter articles is 12/12

Website – The new website is in progress and will still go live sometime soon. www.slasonline.org/joomla

Night Sky Network – Messages need to go out to recruit volunteers for star parties. When messages are sent, please indicate the name, date, time, and location in the subject area, don’t leave it as “Announcing SLAS Events”

SLASdialogs – A couple of new members have joined in the last month.

Dark Site – No event last month, bad weather again.

Loaner Equipment – no new purchases.

Publicity – Press release sent

Observing Programs – no report

Star Parties: Upcoming star parties: Jan 2: SLSC, Jan 22: Lewis and Clark, Jan 26: SLPL, Jan 28: Tesson Ferry, Feb 2: Thornhill, Feb 6: SLSC,

5. Old Business none

6. New Business None

7. Closing Activities Mark made motion to adjourn meeting, Brad seconded. Meeting was adjourned at 9:05pm



Right: Comet Lovejoy

Taken Jan 10, 2015
FL=300mm ISO=6400

Left: Orion Nebula

Taken Jan 10
FL=300mm ISO=6400

**Photos by
Mark Jones**



May 22, 2015

Friday 9:00-11:00 p.m.

SLAS EVENTS

Upcoming Star Parties and Other Events

For details on these and other upcoming events, check out the Night Sky Network Calendar linked on the Home Page for SLAS at

<http://www.slasonline.org>

SLAS Executive Board Meetings *Location will be at the Edward Jones YMCA*

| | | |
|-----------|------------|------------|
| 2/12/2015 | 3/12/2015 | |
| 4/9/2015 | 5/7/2015 | 6/11/2015 |
| 7/9/2015 | 8/6/2015 | 9/10/2015 |
| 10/8/2015 | 11/12/2015 | 12/10/2015 |

Dark Sky Observing Dates

See you in March!

Francis Park Events: These events are on Wednesdays the week nearest the first quarter Moon

| | | |
|------------|-----------|-----------|
| 4/22/2015 | 5/27/2015 | 6/24/2015 |
| 7/22/2015 | 8/19/2015 | 9/16/2015 |
| 10/21/2015 | | |

SLSC Public Telescope Viewing Events: These events are held the first Friday of the month
Planetarium shows start at 7pm

| | | |
|-----------|-----------|--------------|
| 2/6/2015 | 3/6/2015 | 4/3/2015 |
| 5/1/2015 | 6/3/2015 | None in July |
| 8/7/2015 | 9/4/2015 | 10/2/2015 |
| 11/6/2015 | 12/4/2015 | |

YMCA Edward Jones Star Parties

| | | |
|-----------|-----------|-----------|
| 3/16/2015 | 4/13/2015 | 5/11/2015 |
| 6/8/2015 | 7/13/2015 | 8/10/2015 |
| 9/7/2015 | 10/5/2015 | |

Pattonville Observatory Public Viewing Dates

| | |
|-------------------|------------------------|
| January 23, 2015 | Friday 7:00-9:00 p.m. |
| February 13, 2015 | Friday 7:00-9:00 p.m. |
| February 27, 2015 | Friday 7:00-9:00 p.m. |
| March 13, 2015 | Friday 8:00-10:00 p.m. |
| March 27, 2015 | Friday 7:00-9:00 p.m. |
| April 10, 2015 | Friday 8:30-10:30 p.m. |
| April 24, 2015 | Friday 9:00-11:00 p.m. |
| May 1, 2015 | Friday 9:00-11:00 p.m. |

January

| | |
|----------|------------------------------------|
| 16 Fri | SLAS Regular Meeting |
| 22 Wed | Lewis and Clark Library SLCL |
| 23 Fri | Pattonville Observatory |
| 26 Mon | St. Louis Public Library |
| 28 Wed | Tesson Ferry Library SLCL |
| 29 Thurs | Library Telescope Support Training |

February

| | |
|----------|-------------------------------|
| 2 Mon | Thornhill Branch Library SLCL |
| 5 Thurs | Star Party Barr Library |
| 6 Fri | Public Telescope Viewing SLSC |
| 12 Thurs | SLAS Board Meeting |
| 13 Fri | Pattonville Observatory |
| 20 Fri | SLAS Regular Meeting |
| 21 Sat | Homemade Fest !! |
| 24 Tues | Machacek Library SLPL |
| 27 Fri | Pattonville Observatory |

MAY 29-31 MSRAL at Univ AR - Little Rock

SLAS Merchandise Available

SLAS merchandise is now set up for embroidery at

Headz n Threadz at <https://hnt.threadthis.com/>

There are two locations:

Galleria: 2495 St. Louis Galleria, St. Louis, MO 63117

Telephone: 314.862.2695
galleria@headznthreadz.com

Delmar: 6662C Delmar Blvd St. Louis, MO 63130 Telephone: 314.863.2695

delmar@headznthreadz.com

[Delmar Map](#)

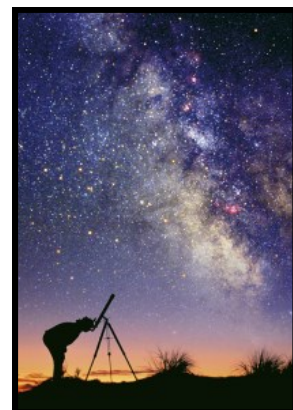
Simply take the garment, hat, etc you wish to have embroidered and they will take care of it. They have the SLAS logo on file. You may make modifications to the colors if you wish.

SLAS Logo Soon to be Available at Infini-tees and Johnny Mac's

The SLAS logo is in the process of setup at Infini-Tees. When it is ready, you will be able to have the SLAS logo placed on any shirt IT sells.

In addition, we will be setting up the logo with Johnny Mac's so there is a local dealer with multiple locations that may make SLAS merchandise. We will let you know when that is ready for sales.

We are checking into patches with the SLAS logo.



LET US KNOW YOU ARE COMING!

To RSVP for any of these events log in to the Night Sky Network and submit your RSVP. If the event is canceled, you will be notified immediately according to the preferences you have selected.

SLAS MEMBERSHIP APPLICATION



Name: Last _____
 First, Middle Initial _____
 Address _____
 City, State, Zip Code _____
 email address _____

Youth @ \$10.00 / 1 year (18 yrs or younger) \$ _____
 Individual @ \$25.00 / 1 year \$ _____
 Family @ \$40.00/1 year \$ _____
Publications with discount available with your SLAS membership:
 Sky and Telescope @ \$32.95 / 1 year \$ _____
 (S&T may also be renewed at their website:
<http://www.skyandtelescope.com>)
 Astronomy @ \$34.00 / 1 year \$ _____
TOTAL ENCLOSED \$ _____

Please send completed form with check (no cash please) made payable to
St Louis Astronomical Society
 Don Ficken, Membership
 13024 Barrett Crossing CT
 St. Louis, MO 63122

Check all that apply:
 Renewal
 Address Change Only
 Please send my newsletter by regular mail
 New Member!

SLAS OFFICERS

| | | |
|--------------------------------|---|--------------|
| President | Jim Small | 314-307-0692 |
| | president at slasonline.org | |
| Vice President | Paul Baldwin | 314-781-4080 |
| | vicepresident at slasonline.org | |
| Secretary | Mark Jones | 636-394-2342 |
| | secretary at slasonline.org | |
| Treasurer | Bill Winningham, (Don Ficken - membership) | |
| | treasurer at slasonline.org | 636-225-0269 |
| Hospitality | Vacant effective Dec 31 | |
| | hospitality at slasonline.org | |
| Board Members at Large: | | |
| | Tom Nickelson | 314-346-9565 |
| | board17 at slasonline.org | |
| | Larry Campbell | 636-244-2867 |
| | board15 at slasonline.org | |
| | Bradley Waller | 314-481-7250 |
| | board16 at slasonline.org | |
| ALCOR | Bill Winningham | 636-225-0269 |
| | (Astronomical League Correspondent) | |
| | treasurer at slasonline.org | |
| MSRAL Rep. | Jim Small | 314-909-7211 |
| | msral_rep at astroleague.org | |

COMMITTEE CHAIRS

| | | |
|----------------------------------|---------------------------------------|--------------|
| Dark Site Coordinator | Mark Jones | 636-394-2342 |
| | darksite at slasonline.org | |
| Librarian | Jim Small | 314-909-7211 |
| | librarian at slasonline.org | |
| Library Telescope Program | Don Ficken | 636-851-9630 |
| | librarian telescope at slasonline.org | |
| Loaner Equipment | Greg Gaines | 314-277-3082 |
| | loaner at slasonline.org | |
| Merchandise | Vacant | |
| | merchandise at slasonline.org | |
| Membership | Don Ficken | 636-225-0269 |
| | membership at slasonline.org | |
| Newsletter Editor | Jim Small | 314-909-7211 |
| | newsletter at slasonline.org | |
| Observing Programs | Mark Jones | 636-394-2342 |
| | observing at slasonline.org | |
| Publicity | Rich Heuermann | 314-962-9231 |
| | publicity at slasonline.org | |
| Recognition | Larry Campbell | 636-244-2867 |
| | recognition at slasonline.org | |
| 'SLASdialogs' Moderator | Mark Jones, Rhonda Whelan | |
| | dialogsmoderator at yahoo.com | |
| Star Party Coordinator | Mike Malolepszy | 314-781-4701 |
| | starparty at slasonline.org | |
| Telescope Making | Bill Davis, Jim Melka | 314-469-3061 |
| | telescope at slasonline.org | |
| Webmaster | Jim Small | 314-909-7211 |
| | webmaster at slasonline.org | |

Devoted to the Interest and Advancement of the Science of Astronomy

ST. LOUIS ASTRONOMICAL SOCIETY

We're on the Web!
<http://www.slasonline.org>

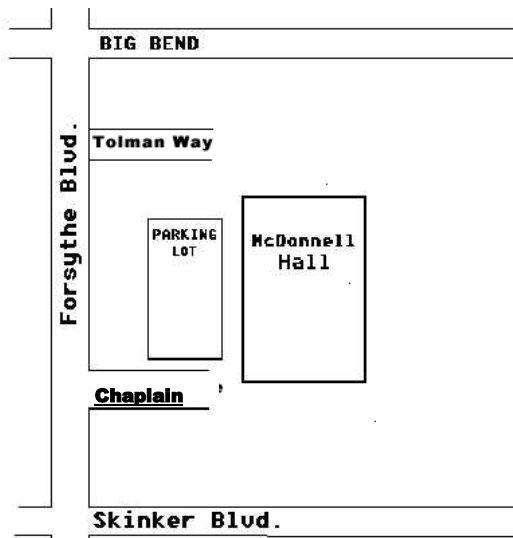


Who We Are and What We Do

St. Louis Astronomical Society is a not-for-profit organization established in 1936. SLAS is devoted to the interest and advancement of the science of astronomy. Our mission is to promote an understanding of the science of astronomy to our members and to the public. Membership is open to anyone with an interest in astronomy.

For more information contact any SLAS officer or visit our website listed above. SLAS is affiliated with the Astronomical League, Night Sky Network and the Mid-States Region of the Astronomical League.

Meetings are held the 3rd Friday of each month at McDonnell Hall at Washington University. See the map to the right for directions.



St. Louis Astronomical Society

Jim Small
13128 Cozyhill Drive
St. Louis, MO 63122

